



Between the Domes Catchment

Between the Domes Catchment Group

Purpose

- Engage, Educate, Enhance. Engaging with the community & all those who live in it while increasing environmental understanding for positive change.

Mission

- Positively influencing good management practices community wide to ensure longevity of healthy landscapes, lifestyles and businesses to live and play in.

Values

- Intergenerational and custodial thinking for living on the land
- Transparency of farming systems and their impacts
- Connecting communities and people
- Pride in our surrounding and recreational opportunities
- Safe and secure community to live and play in



2018

- Initially the catchment group was supported by Landcare Trust, Beef & Lamb NZ, DairyNZ, and Environment Southland.
- An initial public meeting was held in Lumsden in July with a great turnout and lots of enthusiasm, there was a guest speaker and some workshops to engage with the community
- A field day at the Selbie and Menlove properties was one of the first events with a great turnout of almost 50 farmers



Wednesday 21st
November
1-5pm

Meet at Selbies
Woolshed, 874
Five Rivers
Lumsden
Highway

4WD Only
on farm tour

Focusing on impact from management practices on extensive Hill country & their possible solutions.

Farm tour will start at Selbies woolshed, taking us up the hill on Selbies Property and past natural waterways where you will get a fantastic view, and through to Menloves property which has a contrast of partially developed hill country.

There will be a radio station to tune into on the day, this will be advised before leaving the woolshed

Speakers throughout the afternoon will include
Clint Rismann – Water Scientist, discussing sediment management
Dave Connor – Environment Southland, general discussion around Water and Land Plan
Roger Hodson – discuss Rapid Habitat Assessment

The afternoon will conclude with a BBQ and some refreshments, also an opportunity to chat to any speakers and ask questions you may have had throughout the day.
Any queries contact Paula McMillin on 0275842566

All Welcome!

2019

- A field day focusing on Intensive Winter Grazing in the new Environment was held in response to the introduction of new rules – focusing on nitrogen, phosphorus, sediment and e.coli
- BTD were involved in early discussions and meetings regarding the forming of Thriving Southland – and in December 2019 Thriving Southland was officially launched from Laurie’s woolshed
- As a group they connected with others in the region and ag sector including MP Hamish Walker and AgProud

BETWEEN THE DOMES CATCHMENT GROUP

INTENSIVE WINTER GRAZING IN THE NEW ENVIRONMENT

Engage as a catchment, share learnings & influence your global return & customers

Taking ownership of your winter grazing practises

- Understand the 4 key risks in the catchment
- Longterm Impacts of Strategic Grazing
- Managing different stock classes
- Other options to consider if not wintergrazing
- Mitigation Tools
- Where next for the catchment group?

1PM MAY 16TH
142 EAST DOME STATION ROAD, FIVE RIVERS

Opposite Five Rivers Cafe. BBQ to finish
Supported by your Industry bodies & Council :

DairyNZ | environment SOUTHLAND REGIONAL COUNCIL | beef+lamb

All enquiries to Olivia Ross 0278017868

Join the catchment mailing list: paulataylor@hotmail.com



Thriving Southland is building a farmer-driven regional project with Catchment Groups at its core and your views are critical for its success.

Fill in our [survey](#) now to have your say, and encourage your Catchment Group members to as well! Then attend one of the three workshops below to build on the ideas from the survey results, express new ideas and discuss the project.

RSVP by clicking on workshop of your choice below. All workshops are 10am-1.30pm, with lunch provided. Please note: Childcare is available at the Winton workshop. When you RSVP, advise us of the number of children who will be attending and their ages. You will need to provide your children's lunch

8 October 2019
—
Heartland Hotel
GORE

9 October 2019
—
Salvation Army
WINTON

10 October 2019
—
New Life Church
OTAUTAU

2020

Following the disruption of COVID the group hosted one of 10 community events – it was great for people to be able to connect again

Several brainstorming sessions were held through this period and with the backing of Thriving Southland and the possibility of funding the group started to develop plans for a bigger project.

At this time the group reformed following Dipton and Upper Matura forming their own groups.

The reformed group retained the **Between the Domes** name and begun in its current format with 3 co-chairs

Laurie Selbie, Jim Andrew and Daniel Jones

They were supported by Poppy Hardie the newly appointed Thriving Southland Catchment Co-Ordinator.



Join us for a post COVID-19 lockdown get-together with your community, local Catchment Group and Thriving Southland. A great opportunity to meet up with friends while hearing about Thriving Southland and how it can support your Catchment Group and wider community.

Thriving Southland is a programme that provides leadership for farmers by farmers, at a time of significant change in the expectations of how you run your businesses. On-farm change and innovation will be needed to ensure our farming businesses and communities thrive into the future. Bring your on-farm change, science or catchment project ideas along to this event, so Thriving Southland can help you turn them into reality. Or just come along to talk and relax with friends!

All welcome! Bring your families and Staff! Snacks and non-alcoholic drinks supplied.

For more information contact Julia Christie:
julia@thrivingsouthland.co.nz
027 533 6409



10
EVENTS

ACROSS SOUTHLAND
OVER JUNE AND JULY

DATE AND VENUE
DETAILS OVERLEAF

2020

In November Between the Domes group joined with Upper Mataura, Wendonside and Balfour groups to host inspiring Rangitikei farmer and Catchment group champion Roger Dalrymple – he shared his experience of building groups with strong purpose.

- Catch up and get ahead of societies expectations
- Understand farm effects on our environment
- Educate and enhance good management practices
- Have tools (data) in the toolbox
- Need other people to understand and tell our story – not just farmers
- Connect and enrich our farming businesses
- Support each other through challenging times
- Change the model from top down to bottom up

These points resonated strongly with the group and their reasons for existing.

Roger Dalrymple to speak at 'Strong Catchment Groups, Strong Communities' events

November 11, 2020

Groups, Strong Communities' events

November 11, 2020



2020



BETWEEN THE DOMES CATCHMENT GROUP

Christmas Wetland Tour

Starting point & BBQ at Woolshed 874 Five Rivers - Lumsden Highway

Come on a tour with us to view wetlands in the Between the Domes catchment and to learn about how stream plantings and wetlands function and capture nutrients.

There will be expert speakers to provide advice and discuss some existing wetlands in various stages of development.

We will end the tour with a social BBQ to round off the year with.

BBQ provided, BYO refreshments
Contact Jim Andrews 027 2316363
for further info.



Thur 10 Dec
3pm Tour
6pm BBQ
ALL WELCOME



2021 Two major projects commence

- Baleage Wrap Recycling Project – “Providing link in the bale wrap chain”

A survey was undertaken of 26 farmers and 5 rural contractors in the Northern Southland district to gauge interest with this project which hopes to help facilitate the collection of baleage wrap for recycling in Invercargill.

- “Canvassing Between the Domes” Project – Understanding the dynamics of the catchment

This project received funding from Thriving Southland and involves 3 workstreams

1. Catchment landholder survey
2. Wetland siting, design and costings
3. Between the Domes Catchment booklet

Between the Domes Catchment Group

BALEAGE WRAP

We are working with

- plasback
- RECYCLE SOUTH
- SCULLYS TRANSPORT LTD CENTRE BUSH PH (03) 236 0759
- AGRECOVERY

NORTHERN SOUTHLAND TRANSPORT

David Kean Farmers Dipping

The work so far

- Liasing with all stakeholders
- Working with Agrecovery on pilot study for Southland
- Working with Recycle South and transport companies

What's Next

- Stakeholder meeting - August
- Agrecovery pilot programme
- Supporting Recycle South with their new pelletiser
- Information shared around Southland catchment groups

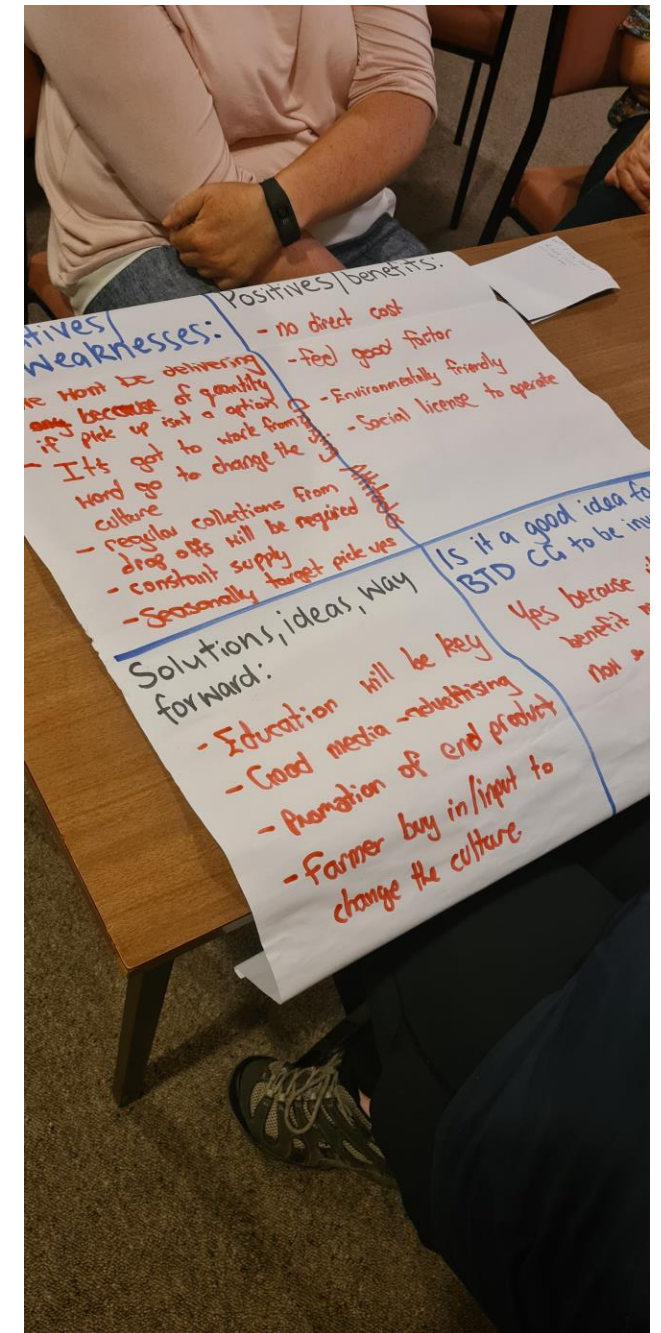
Contact Us :
btdcatchment@gmail .com or the "Between the Domes Catchment Domes" group on Facebook

Balewrap Recycling Project



Working with AgRecovery and other local stakeholder to facilitate transport of used balewrap to point of recycling.

This project is ongoing and the group are awaiting a visit from the AgRecovery team next month to find out more about funding availability and the next steps.



Winter Wellbeing Speaker Event 2021



Between the Domes Catchment Group Presents...

Climate discussion with **Keith Woodford**

Keith Woodford consults as an agri-food systems specialist through his own company AgriFood Systems Ltd. He holds an M Agr Sc degree from Lincoln University and a PhD from University of Queensland. Keith retired from Lincoln University in 2014 and now holds honorary appointments as Professor of AgriFood Systems at Lincoln University and as Senior Research Fellow at the Contemporary China Research Centre at Victoria University, Wellington. He also writes regularly for rural media, currently fortnightly at Farmers Weekly, also online at interest.co.nz, and at his own site <https://keithwoodford.wordpress.com>.

A community solution **Southland Charity Hospital**

Dr. Murray Pfeifer is not only a General Surgeon at Southland Hospital with over 40 years of public and private practise experience, he is now also the Chair of the Southland Charity Hospital Board. He was inspired to support the establishment of the Charity Hospital by the courageous story of Blair and Melissa Vining and his awareness of the growing health care needs of the Southland community.

**7.30pm Thur 8th July
Lumsden Memorial Hall**

FREE EVENT - ALL WELCOME



Prof. Keith Woodford

Dr. Murray Pfeifer

Join us for a fascinating evening hearing compelling presenter, Keith Woodford discuss greenhouse gasses and agriculture. Also hear the inspiring story of the Southland Charity Hospital - a community taking matters into their own hands to make a difference.



2021 Community Planting



**BETWEEN THE DOMES
CATCHMENT GROUP**

Xmas BBQ & Planting Afternoon

Join the **Between the Domes Catchment Group** and **Reforest Northern Southland Trust** for a free **Xmas BBQ** and native planting afternoon in **Lumsden**.

Help the catchment group celebrate a fantastic year by joining them for a bite to eat and to plant some native seedlings.

Meet at the planting site on Lydia Street (down from McKeown's Fuel). Food and soft drink provided. **BYO** gardening gloves, gumboots and spade. All welcome, bring the kids.

Planting from 4pm, BBQ from 5.30pm - turn up when works for you!

**Fri 3 Dec
4pm-7pm**

ALL WELCOME



Meat kindly donated by:



2021 Community Planting

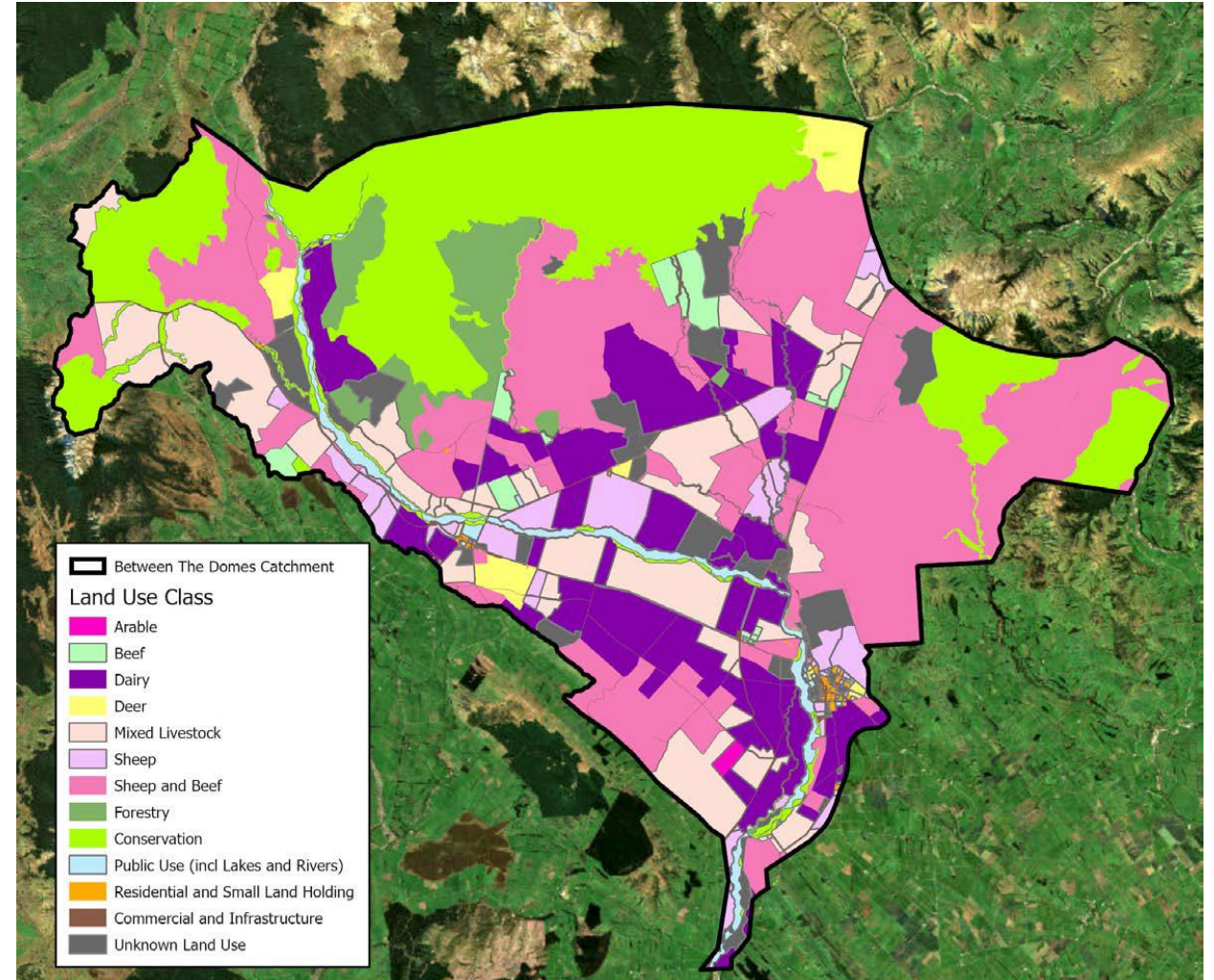


Catchment Survey, Booklet and Wetland Project

Understanding the dynamics of the catchment and improve the water quality of the Oreti and its tributaries located between the domes.

The idea behind collecting this info this is to:

1. To understand the characteristics of our catchment
2. Recognise the good things already done, happening
3. Draw a line in the sand so we can measure and prove positive actions/changes from now on.
4. Help identify the best area to focus the NIWA Wetland project on.
5. Improve engagement in our catchment group
6. To showcase our Catchment



Between the Domes Catchment Group Winter Event

Monday 4th July
7.30-9.30pm

Lumsden
Memorial Hall



Hot off the heels of last year's successful event, we have Derek Daniell (Wairere Rams), and Tom Slee (Surfing For Farmers).

We will discuss, environmental challenges, opportunites, Surfing for Farmers and the Godzone multisport race!

Everyone is welcome to come along!

Supper provided.

📞 RSVP text Rosie 027 217 2597

✉️ btdcatchment@gmail.com



2022 Winter Wellbeing Speaker Event



Catchment Survey, Booklet and Wetland Project

The final part of this project involved working with NIWA to identify sites for on-farm pollution mitigation actions.

7 possible project sites were assessed and 3 sites were chosen for further plans to be developed – we are currently waiting on NIWA to finalise these plans.

Details of these will then be added to the booklet.

BTD will follow the development of these sites over the next few years.

The first event following the launch of the booklet is going to be a wetlands field day on 30th November 2022

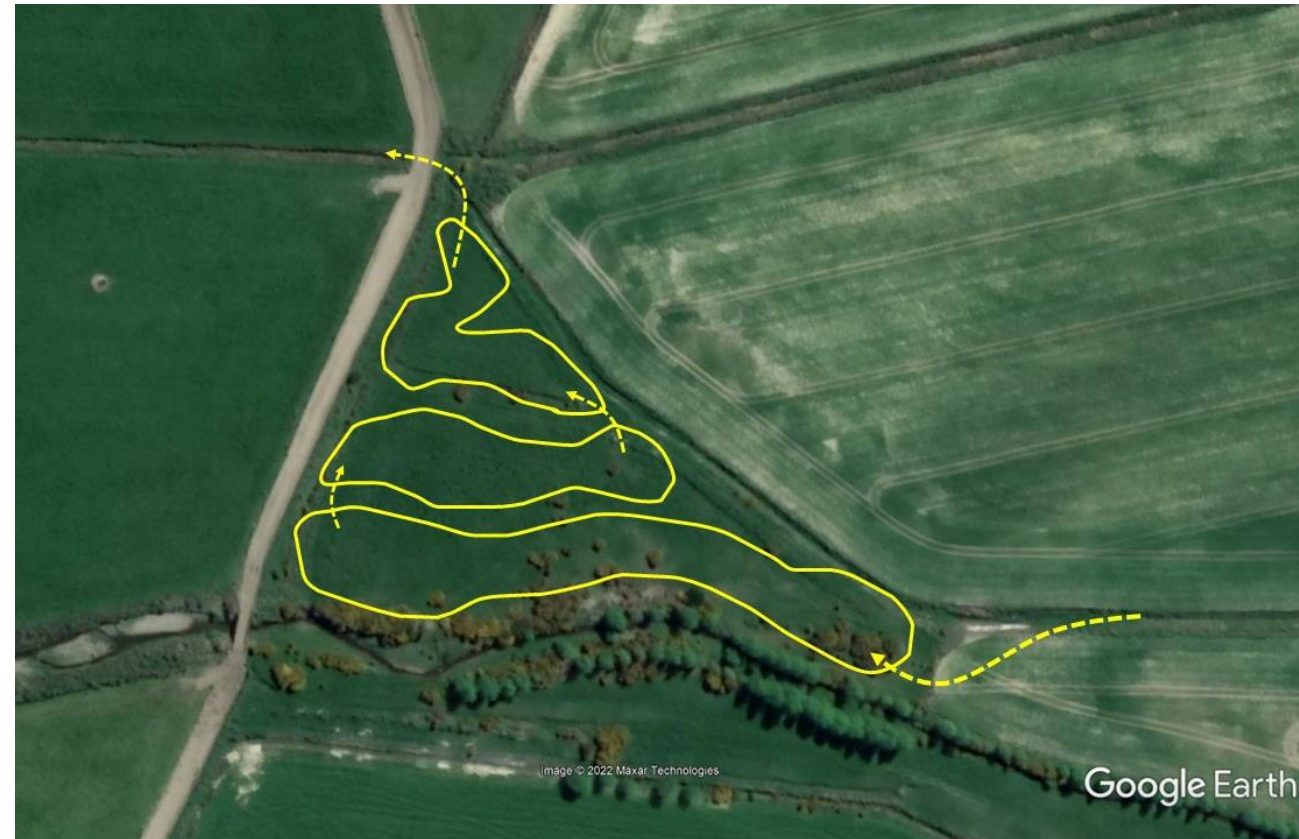


Figure 3-6: Concept drawing of potential constructed wetland intercepting tile drain flows. Actual wetlands may include different shapes, islands, and deep-water zones.

An aerial photograph of a wide river valley. The river flows through a landscape of green fields and brownish soil. In the background, there are large, rugged mountains under a blue sky with scattered white clouds. The text "Thanks for your time today." is overlaid in white, sans-serif font across the middle of the image.

Thanks for your time today.

Find out more about our catchment group at
<https://www.thrivingsouthland.co.nz/between-the-domes/>

Award Winning!

